



SRK25ZTL-W / SRC25ZTL-W

2.5 (0.8 ~ 3.2)

Indoor Unit : SRK25ZTL-W

Outdoor Unit : SRC25ZTL-W

Specifications

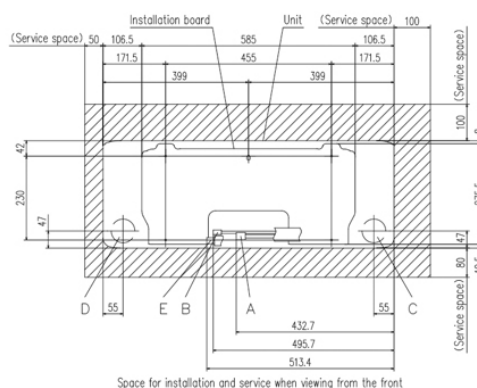
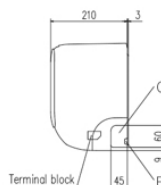
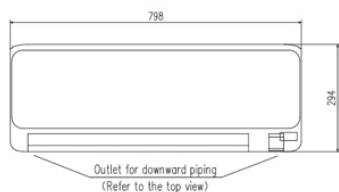
R32

Indoor unit			SRK25ZTL-W	
Outdoor unit			SRC25ZTL-W	
Power source			1Phase, 220 - 240, 50Hz	
Nominal cooling capacity (Min~Max)		kW	2.5 (0.8 ~ 3.2)	
Nominal heating capacity (Min~Max)		kW	3.0 (1.0 ~ 4.8)	
Power consumption	Cooling/Heating	kW	0.58 / 0.66	
EER/COP	Cooling/Heating		4.31 / 4.55	
Max. running current		A	9	
Sound power level	Indoor	Cooling/Heating	dB(A)	55 / 55
	Outdoor	Cooling/Heating		58 / 59
Sound pressure level	Indoor	Cooling (Hi/Me/Lo/Ulo)		41 / 36 / 26 / 22
		Heating (Hi/Me/Lo/Ulo)		41 / 36 / 29 / 22
	Outdoor	Cooling/Heating		47 / 46
Air flow	Indoor	Cooling (Hi/Me/Lo/Ulo)	m3/min	10.0 / 8.0 / 5.3 / 4.4
		Heating (Hi/Me/Lo/Ulo)		11.0 / 9.4 / 6.5 / 5.0
	Outdoor	Cooling/Heating		22.8 / 20.9
Exterior Dimensions	Indoor	Height x Width x Depth	mm	294 x 798 x 210
	Outdoor			540 x 645 (+57) x 275
Net weight	Indoor / Outdoor		kg	9.0 / 24.0
Refrigerant		Type/GWP		R32 / 675
Refrigerant		Charge	kg/TCO2Eq	0.59 / 0.40
Refrigerant piping size		Liquid/Gas	ø inch	6.35(1/4") / 9.52(3/8")
Refrigerant line (one way) length			m	Max.20
Vertical height differences		Outdoor is higher/lower	m	Max.15 / Max.15
Outdoor operating temperature range	Cooling		°C	-15~46
	Heating			-15~24
Clean filter			Allergen Clear Filter x 1, Photocatalytic Washable Deodorizing Filter x 1	
Energy Class (Cooling/Heating)			A+ +/A+ +	
SEER			6.90	
SCOP (Average climate)			4.70	
Pdesign (cooling/heating(@-10°C))		kW	2.50/2.70	
Annual Electricity Consumption (cooling/heating)		kWh/a	127/804	
Designated Heating Season			Average	

- The data is measured under the following conditions(ISO-T1, H1). Cooling: Indoor temp. of 27°CDB, 19°CWB, and outdoor temp. of 35°CDB. Heating: Indoor temp. of 20°CDB, and outdoor temp. of 7°CDB, 6°CWB.
- Sound level indicates the value in an anechoic chamber. During operation these values are somewhat higher due to ambient conditions.
- 'tonne(s) of CO2 equivalent' means a quantity of greenhouse gases- expressed as the product of the weight of the greenhouse gases in metric tonnes and of their global warming potential.
- SEER/SCOP are based on EN14825:2016 and Commission regulation (EU) No.2016/2281

Schematics

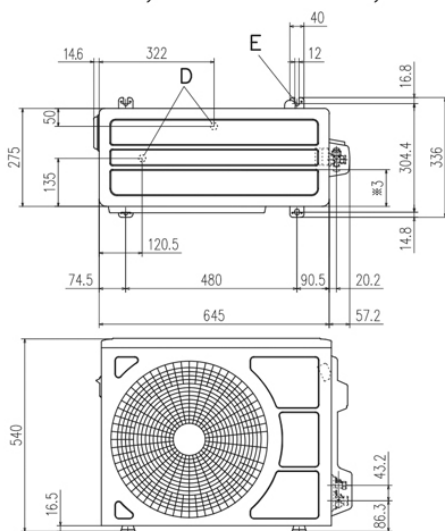
SRK15ZTL-W SRK20ZTL-W SRK25ZTL-W SRK35ZTL-W SRK50ZTL-W



Space for installation and service when viewing from the front

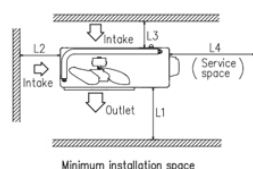
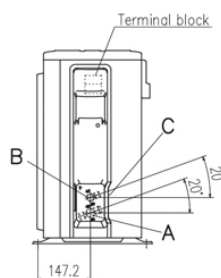
Symbol	Content	
A	Gas piping	SRK 15,20,25,35 $\phi 9.52$ (3/8") (Flare) SRK 50 $\phi 12.7$ (1/2") (Flare)
B	Liquid piping	$\phi 6.35$ (1/4") (Flare)
C	Hole on wall for right rear piping	($\phi 65$)
D	Hole on wall for left rear piping	($\phi 65$)
E	Drain hose	VP16
F	Outlet for wiring (on both side)	
G	Outlet for piping (on both side)	

SRC15ZTL-W SRC20ZTL-W SRC25ZTL-W SRC35ZTL-W SRC25ZSP-W,-S SRC35ZSP-W,-S



Symbol	Content	
A	Service valve connection (gas side)	$\phi 9.52$ (3/8") (Flare)
B	Service valve connection (liquid side)	$\phi 6.35$ (1/4") (Flare)
C	Pipe/cable draw-out hole	
D	Drain discharge hole	$\phi 20 \times 2$ places
E	Anchor bolt hole	M10-12 $\times 4$ places

Installation space	
L1	280 or more
L2	100 or more
L3	80 or more
L4	250 or more



Minimum installation space